

054376
 RECEIVED
 LARAMIE COUNTY
 CHEYENNE, WY.

CERTIFIED LAND CORNER RECORDATION '89 FEB 21 PM 1 09

DESCRIPTION OF CORNER EVIDENCE FOUND, AND ORIGINAL RECORD (if known)

S.15 S.14
 S.22 S.23
 T.17N., R.64W.
 6th P.M.

Found 3"x12"x18" limestone projecting 8" above ground 2' East of fence angle post & 2.4' East of 1/2" rebar. No marks visible.

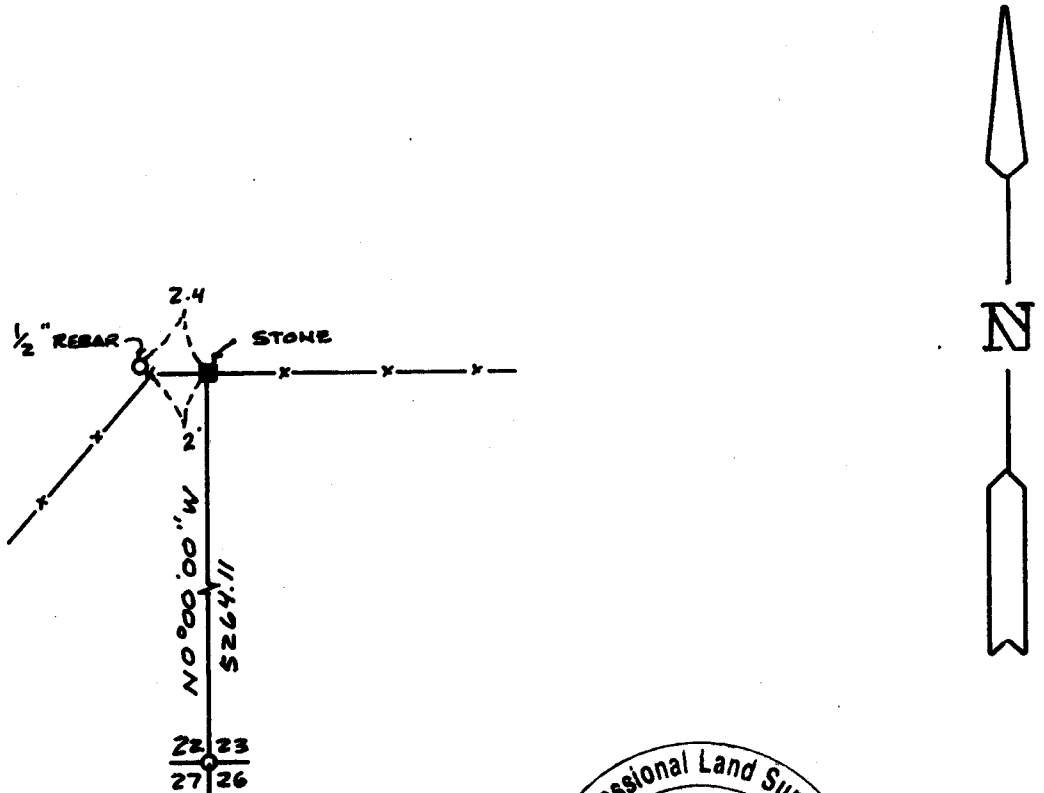
G.L.O. Record: Limestone 16"x14"x13", 10" deep with 3 notches on South side & 2 notches on East side.

DESCRIPTION OF MONUMENT AND ACCESSORIES ESTABLISHED TO PERPETUATE THE ORIGINAL LOCATION OF THIS CORNER:

At the corner: Not remonumented.

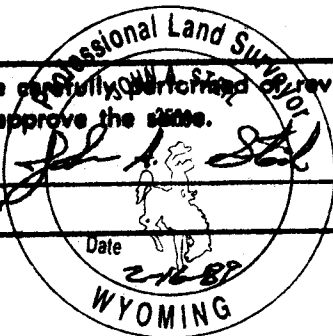
Accessories : See ties below.

SKETCH, WITH COURSE AND DISTANCE TO ADJACENT CORNER IF DETERMINED IN THIS SURVEY. (May Sketch or Paste Reproduction on Reverse Side.)



I, John A. Steil certify that I have carefully performed and reviewed the work done on the diagrammed corner as reported on this recordation form and approve the same.

Signature of Surveyor



L.S. 2500
 Registration No.

STATE OF WYOMING,
 Office of Clerk and Recorder,
 County of _____

This "corner record" was filed for record on the _____ day of _____, 19____, was noted on the cross-index plat and is assigned page No. _____, in book No. _____

Janet C. Whitehead
 County Official

Cross Index No.	N-17	T. 17N	R. 64W	Mer. 6th
				Mer.
				Mer.
				Mer.
				Mer.
				Mer.
				Mer.